

# \$179,900 - 249 10121 80 Avenue, Edmonton

MLS® #E4416355

**\$179,900**

1 Bedroom, 1.00 Bathroom, 655 sqft

Condo / Townhouse on 0.00 Acres

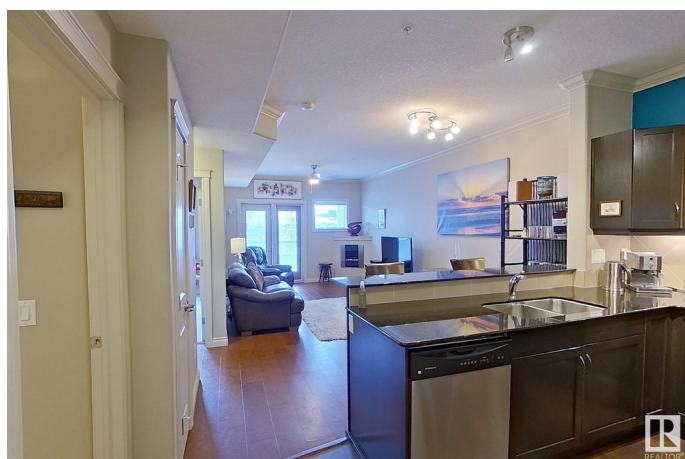
Ritchie, Edmonton, AB

Move in ready. One bedroom unit located in quiet building off of Whyte Ave in Strathcona. Everything that you would want in a home. Open kitchen. Quartz counters and stainless steel appliances. Open dining and living area. Corner electric fireplace. Patio doors lead to private south facing balcony looking over a green space. Neutral Paint tones and cork flooring. Spacious master bedroom with walk through closet leading to 4 piece bathroom. Separate in-suite laundry room. One underground titled parking stall and storage unit. Separate room is accessible for bicycle storage. The building boasts open spaces to relax and well equipped gym. Guest suite and car wash as an added bonus. Elevator access. Taxes for unit and parking stall is \$1724 for 2024.

Built in 2006

## Essential Information

MLS® #	E4416355
Price	\$179,900
Bedrooms	1
Bathrooms	1.00
Full Baths	1
Square Footage	655
Acres	0.00
Year Built	2006



Type	Condo / Townhouse
Sub-Type	Lowrise Apartment
Style	Single Level Apartment
Status	Active

### **Community Information**

Address	249 10121 80 Avenue
Area	Edmonton
Subdivision	Ritchie
City	Edmonton
County	ALBERTA
Province	AB
Postal Code	T6E 0B9

### **Amenities**

Amenities	No Animal Home, No Smoking Home, Parking-Visitor, Recreation Room/Centre, Security Door, Vinyl Windows, Storage Cage
Parking Spaces	1
Parking	Underground

### **Interior**

Interior Features	ensuite bathroom
Appliances	Dishwasher - Energy Star, Dryer, Microwave Hood Fan, Refrigerator, Stove-Electric, Washer, Window Coverings
Heating	Hot Water, Natural Gas
Fireplace	Yes
Fireplaces	Corner
# of Stories	4
Stories	1
Has Basement	Yes
Basement	None, No Basement

### **Exterior**

Exterior	Wood, Vinyl
Exterior Features	Landscaped, Shopping Nearby, View City
Roof	Asphalt Shingles
Construction	Wood, Vinyl
Foundation	Concrete Perimeter

### **Additional Information**

Date Listed	December 18th, 2024
Days on Market	108
Zoning	Zone 17
Condo Fee	\$439

DATA IS DEEMED RELIABLE BUT IS NOT GUARANTEED ACCURATE BY THE REALTORS® ASSOCIATION OF EDMONTON. COPYRIGHT 2025 BY THE REALTORS® ASSOCIATION OF EDMONTON. ALL RIGHTS RESERVED. Trademarks are owned or controlled by the Canadian Real Estate Association (CREA) and identify real estate professionals who are members of CREA (REALTOR®, REALTORS®) and/or the quality of services they provide (MLS®, Multiple Listing Service®)

Listing information last updated on April 5th, 2025 at 4:32am MDT