

\$614,900 - 145 Creekside Lane, Leduc

MLS® #E4416391

\$614,900

4 Bedroom, 3.00 Bathroom, 2,194 sqft

Single Family on 0.00 Acres

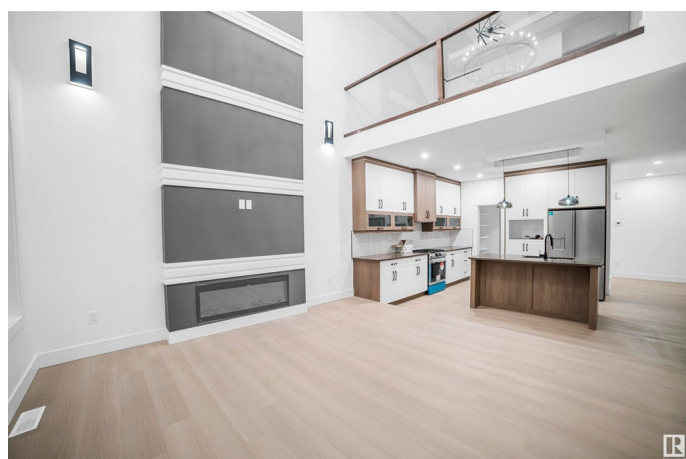
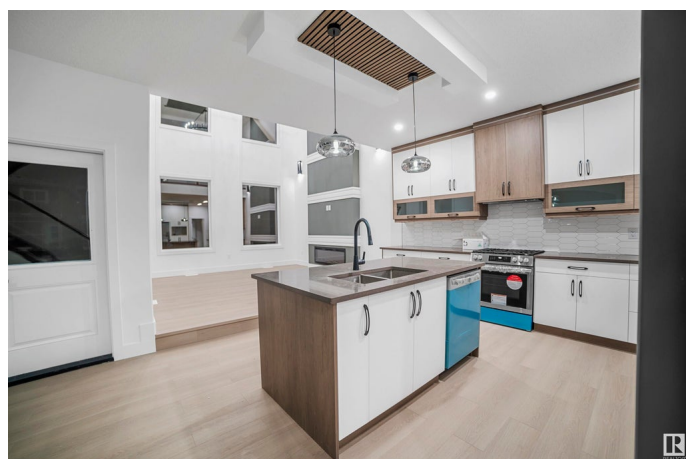
Creekside (Leduc), Leduc, AB

Step into this beautiful home, where modern living meets convenience! The living area of this home features a bright, open-concept design that seamlessly blends comfort and style. The spacious layout creates a welcoming atmosphere, perfect for both relaxation and entertaining. The main floor boasts a stunning kitchen, a cozy bedroom, and a full bathroom. Upstairs, unwind in your spacious master suite with a luxurious 5-piece ensuite, plus two additional rooms and a bonus room for ultimate flexibility. With a side entrance to the basement and a prime location in a peaceful cul-de-sac, this home offers endless potential. Plus, enjoy the proximity to the airport, shopping malls, and easy access to Highway 2. Don't miss out on this gem has it all!

Built in 2024

Essential Information

MLS® #	E4416391
Price	\$614,900
Bedrooms	4
Bathrooms	3.00
Full Baths	3
Square Footage	2,194
Acres	0.00
Year Built	2024



Type	Single Family
Sub-Type	Detached Single Family
Style	2 Storey
Status	Active

Community Information

Address	145 Creekside Lane
Area	Leduc
Subdivision	Creekside (Leduc)
City	Leduc
County	ALBERTA
Province	AB
Postal Code	T9E 1T1

Amenities

Amenities	Ceiling 9 ft., Detectors Smoke, 9 ft. Basement Ceiling
Parking	Double Garage Attached

Interior

Interior Features	ensuite bathroom
Appliances	Dishwasher-Built-In, Dryer, Hood Fan, Refrigerator, Stove-Gas, Washer
Heating	Forced Air-1, Natural Gas
Stories	2
Has Basement	Yes
Basement	Full, Unfinished

Exterior

Exterior	Wood, Vinyl
Exterior Features	Airport Nearby, Cul-De-Sac
Roof	Asphalt Shingles
Construction	Wood, Vinyl
Foundation	Concrete Perimeter

Additional Information

Date Listed	December 18th, 2024
Days on Market	108
Zoning	Zone 81

DATA IS DEEMED RELIABLE BUT IS NOT GUARANTEED ACCURATE BY THE REALTORS® ASSOCIATION OF EDMONTON. COPYRIGHT 2025 BY THE REALTORS® ASSOCIATION OF EDMONTON. ALL RIGHTS RESERVED. Trademarks are owned or controlled by the Canadian Real Estate Association (CREA) and identify real

estate professionals who are members of CREA (REALTOR®®, REALTORS®®) and/or the quality of services they provide (MLS®®, Multiple Listing Service®®)

Listing information last updated on April 5th, 2025 at 8:02am MDT