

\$699,000 - 164 Caledon Crescent, Spruce Grove

MLS® #E4420084

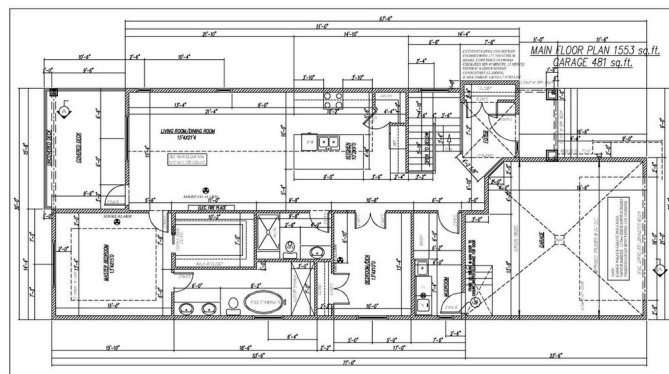
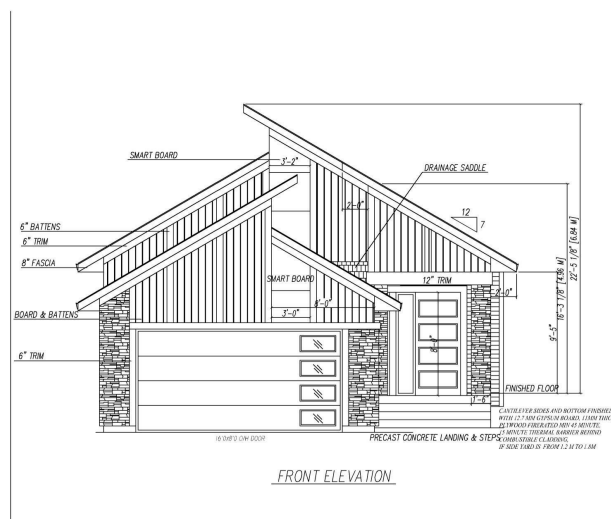
\$699,000

2 Bedroom, 2.00 Bathroom, 1,553 sqft

Single Family on 0.00 Acres

Copperhaven, Spruce Grove, AB

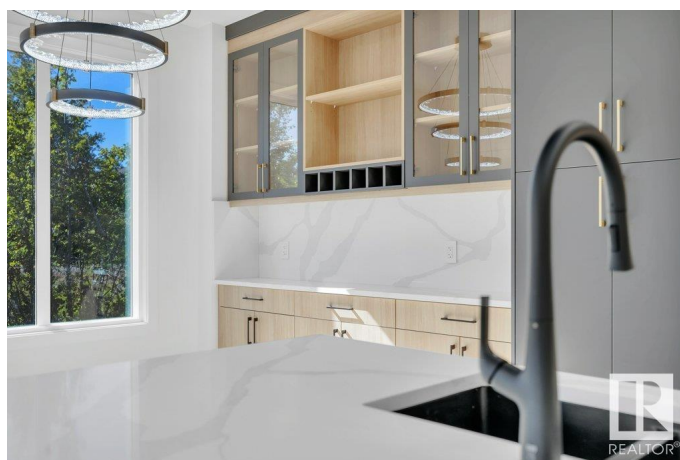
Here is your opportunity to customize a generous sized bungalow on a large 4584 sqft lot â€“ backing a pond! Enjoy an open floor plan with vaulted ceilings, main floor laundry with utility sink, and a covered deck. The primary bedroom will have a large walk-in closet and a spa-like ensuite with double sinks, freestanding tub, and tiled shower. A 2nd main floor bedroom and laundry room also on the main floor. Walking distance to two schools and Includes a 10-year new home warranty for peace of mind. Upgrades & changes can potentially be accommodated at this stage. *Pictures are not of this home, but are of a recent build by the builder showing level of finishes. Build will take approximately 6 months.



Built in 2025

Essential Information

MLS® #	E4420084
Price	\$699,000
Bedrooms	2
Bathrooms	2.00
Full Baths	2
Square Footage	1,553
Acres	0.00
Year Built	2025



Type	Single Family
Sub-Type	Detached Single Family
Style	Bungalow
Status	Active

Community Information

Address	164 Caledon Crescent
Area	Spruce Grove
Subdivision	Copperhaven
City	Spruce Grove
County	ALBERTA
Province	AB
Postal Code	T7X 0Y6

Amenities

Amenities	Hot Water Natural Gas, No Animal Home, No Smoking Home, Vaulted Ceiling, Vinyl Windows, HRV System, Natural Gas BBQ Hookup
Parking	Double Garage Attached

Interior

Interior Features	ensuite bathroom
Appliances	Builder Appliance Credit
Heating	Forced Air-1, Natural Gas
Fireplace	Yes
Fireplaces	Insert
Stories	1
Has Basement	Yes
Basement	Full, Unfinished

Exterior

Exterior	Wood, Brick, Vinyl
Exterior Features	No Back Lane, Playground Nearby, Public Transportation, Schools, Shopping Nearby, Stream/Pond
Roof	Asphalt Shingles
Construction	Wood, Brick, Vinyl
Foundation	Concrete Perimeter

Additional Information

Date Listed	February 2nd, 2025
-------------	--------------------

Days on Market 62

Zoning Zone 91

DATA IS DEEMED RELIABLE BUT IS NOT GUARANTEED ACCURATE BY THE REALTORS® ASSOCIATION OF EDMONTON. COPYRIGHT 2025 BY THE REALTORS® ASSOCIATION OF EDMONTON. ALL RIGHTS RESERVED. Trademarks are owned or controlled by the Canadian Real Estate Association (CREA) and identify real estate professionals who are members of CREA (REALTOR®, REALTORS®) and/or the quality of services they provide (MLS®, Multiple Listing Service®)

Listing information last updated on April 5th, 2025 at 6:17pm MDT