

\$149,900 - N/A, Rural Lac Ste. Anne County

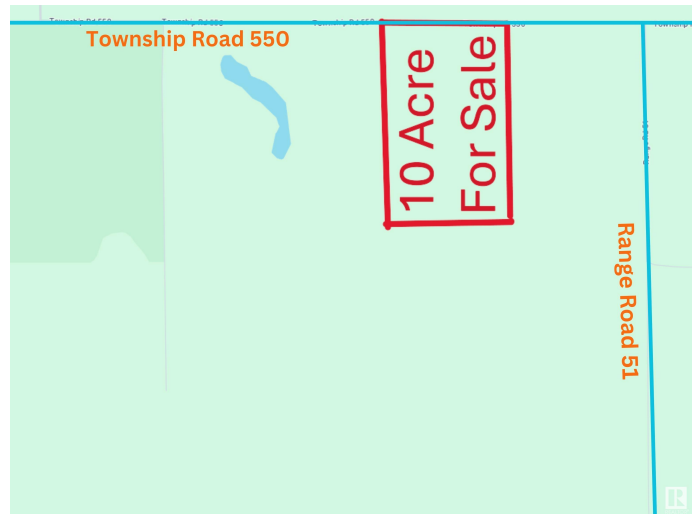
MLS® #E4421756

\$149,900

0 Bedroom, 0.00 Bathroom,
Rural on 10.10 Acres

None, Rural Lac Ste. Anne County, AB

Serene 10-Acre Treed Lot in Lac Ste. Anne
“ A Nature Lover’s Retreat! Discover the perfect opportunity to carve out your private homestead on this beautifully treed 10-acre lot in Lac Ste. Anne. Nestled in a prime location just 40 minutes from Edmonton, this peaceful escape offers the perfect blend of seclusion and convenience. Surrounded by nature and close to four stunning lakes—Lake Isle, Alberta Beach, Wabamun Lake, and Birch Lake—this property is ideal for year-round outdoor recreation, from boating and fishing to hiking and camping. Whether you're dreaming of building your dream home, setting up a weekend getaway, or simply investing in land, this picturesque property has endless potential. Don’t miss this rare opportunity to own a slice of nature’s paradise!



Essential Information

MLS® #	E4421756
Price	\$149,900
Bathrooms	0.00
Acres	10.10
Type	Rural
Sub-Type	Vacant Lot/Land
Status	Active

Community Information



Address	N/A
Area	Rural Lac Ste. Anne County
Subdivision	None
City	Rural Lac Ste. Anne County
County	ALBERTA
Province	AB
Postal Code	T0E 0N0

Exterior

Exterior Features See Remarks

Additional Information

Date Listed February 15th, 2025

Days on Market 61

Zoning Zone 70

DATA IS DEEMED RELIABLE BUT IS NOT GUARANTEED ACCURATE BY THE REALTORS® ASSOCIATION OF EDMONTON. COPYRIGHT 2025 BY THE REALTORS® ASSOCIATION OF EDMONTON. ALL RIGHTS RESERVED. Trademarks are owned or controlled by the Canadian Real Estate Association (CREA) and identify real estate professionals who are members of CREA (REALTOR®, REALTORS®) and/or the quality of services they provide (MLS®, Multiple Listing Service®)

Listing information last updated on April 17th, 2025 at 5:47am MDT