

## \$157,500 - 4622 55 Avenue, Wetaskiwin

MLS® #E4422576

**\$157,500**

0 Bedroom, 0.00 Bathroom,  
Single Family on 0.00 Acres

Recline, Wetaskiwin, AB

130' x 60' vacant lot in Wetaskiwin! Can build a single family home OR up to a 4plex with 4 legal basement suites. Preliminary plans for a 6plex available. Comes with topographic survey.



### Essential Information

|           |                 |
|-----------|-----------------|
| MLS® #    | E4422576        |
| Price     | \$157,500       |
| Bathrooms | 0.00            |
| Acres     | 0.00            |
| Type      | Single Family   |
| Sub-Type  | Vacant Lot/Land |
| Status    | Active          |

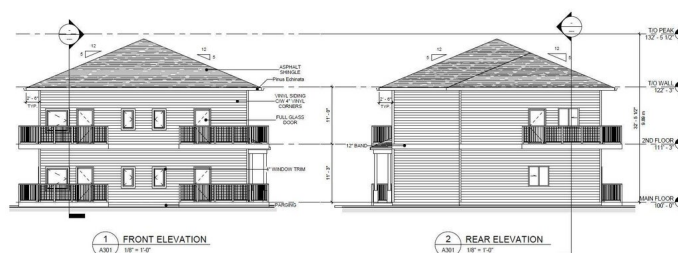
### Community Information

|             |                |
|-------------|----------------|
| Address     | 4622 55 Avenue |
| Area        | Wetaskiwin     |
| Subdivision | Recline        |
| City        | Wetaskiwin     |
| County      | ALBERTA        |
| Province    | AB             |
| Postal Code | T9A 1A2        |

### Exterior

Exterior Features See Remarks

### Additional Information



Date Listed February 22nd, 2025

Days on Market 58

Zoning Zone 80

DATA IS DEEMED RELIABLE BUT IS NOT GUARANTEED ACCURATE BY THE REALTORS® ASSOCIATION OF EDMONTON. COPYRIGHT 2025 BY THE REALTORS® ASSOCIATION OF EDMONTON. ALL RIGHTS RESERVED. Trademarks are owned or controlled by the Canadian Real Estate Association (CREA) and identify real estate professionals who are members of CREA (REALTOR®, REALTORS®) and/or the quality of services they provide (MLS®, Multiple Listing Service®)

Listing information last updated on April 21st, 2025 at 4:32am MDT