

\$819,000 - 1 Westlin Drive, Leduc

MLS® #E4422912

\$819,000

4 Bedroom, 3.50 Bathroom, 2,601 sqft

Single Family on 0.00 Acres

Windrose, Leduc, AB

Visit the Listing Brokerage (and/or listing REALTOR®) website to obtain additional information. This impressive home features soaring ceilings, a breathtaking two-story stone fireplace, and high-end finishes throughout. The gourmet kitchen boasts granite countertops, upgraded cabinetry, premium appliances, a granite sink, prep sink, pot filler, and a massive island with a built-in table. The dining area has a tray ceiling, while the walk-through pantry and mudroom with built-in benches add convenience. Upstairs, a unique open-slat staircase leads to a spacious bonus room, two large bedrooms, and a luxurious primary suite with a vaulted wood-accented ceiling, spa-like ensuite, and walk-in closet with built-in dressers. The fully finished lower level is perfect for entertaining, featuring a family room, fourth bedroom with a walk-in closet, four-piece bath, and a custom wet bar with two bar fridges. Outside, enjoy a landscaped yard with a two-tier, no-maintenance deck, a high-end hot tub, and an oversize

Built in 2012

Essential Information

MLS® # E4422912

Price \$819,000



Bedrooms 4
 Bathrooms 3.50
 Full Baths 3
 Half Baths 1
 Square Footage 2,601
 Acres 0.00
 Year Built 2012
 Type Single Family
 Sub-Type Detached Single Family
 Style 2 Storey
 Status Active

Community Information

Address 1 Westlin Drive
 Area Leduc
 Subdivision Windrose
 City Leduc
 County ALBERTA
 Province AB
 Postal Code T9E 0N8

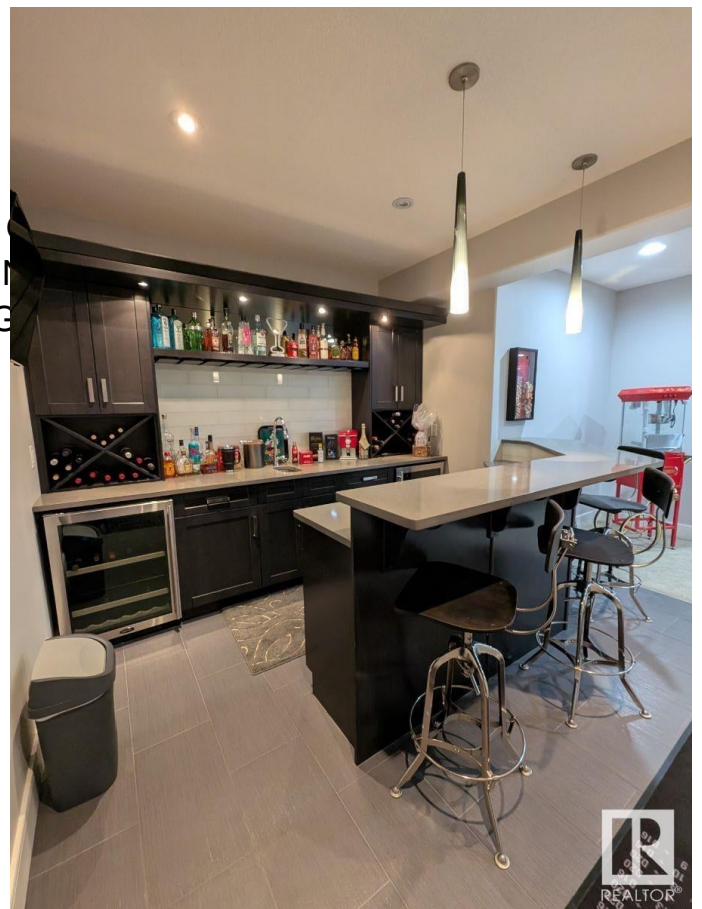
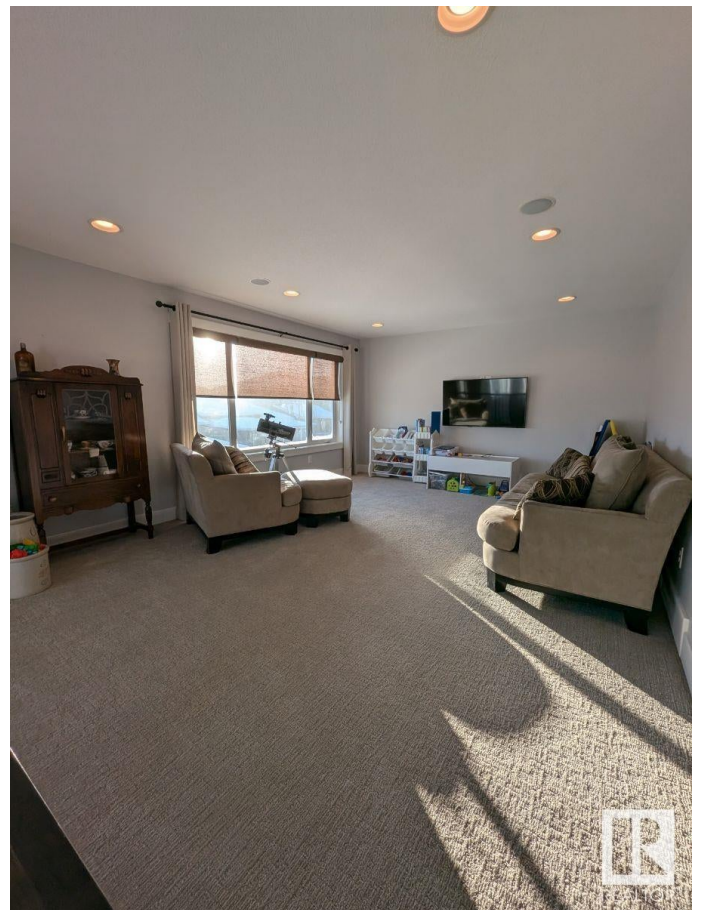
Amenities

Amenities Air Conditioner, Bar, Closet
 Tub, Hot Water Tankless, M
 Windows, Wet Bar, Natural G
 Parking Spaces 4
 Parking Double Garage Attached

Interior

Interior Features ensuite bathroom
 Appliances See Remarks
 Heating Forced Air-1, Natural Gas
 Fireplace Yes
 Fireplaces Stone Facing
 Stories 2
 Has Basement Yes
 Basement Full, Finished

Exterior



Exterior	Wood, Vinyl
Exterior Features	Airport Nearby, Corner Lot, Golf Nearby, Landscaped, No Back Lane, Playground Nearby, Schools, Shopping Nearby
Roof	Asphalt Shingles
Construction	Wood, Vinyl
Foundation	Concrete Perimeter

Additional Information

Date Listed	February 25th, 2025
Days on Market	50
Zoning	Zone 81

DATA IS DEEMED RELIABLE BUT IS NOT GUARANTEED ACCURATE BY THE REALTORS® ASSOCIATION OF EDMONTON. COPYRIGHT 2025 BY THE REALTORS® ASSOCIATION OF EDMONTON. ALL RIGHTS RESERVED. Trademarks are owned or controlled by the Canadian Real Estate Association (CREA) and identify real estate professionals who are members of CREA (REALTOR®, REALTORS®) and/or the quality of services they provide (MLS®, Multiple Listing Service®)

Listing information last updated on April 16th, 2025 at 9:02am MDT