

\$649,900 - 35 Penn Place, Spruce Grove

MLS® #E4424010

\$649,900

3 Bedroom, 2.50 Bathroom, 2,044 sqft
Single Family on 0.00 Acres

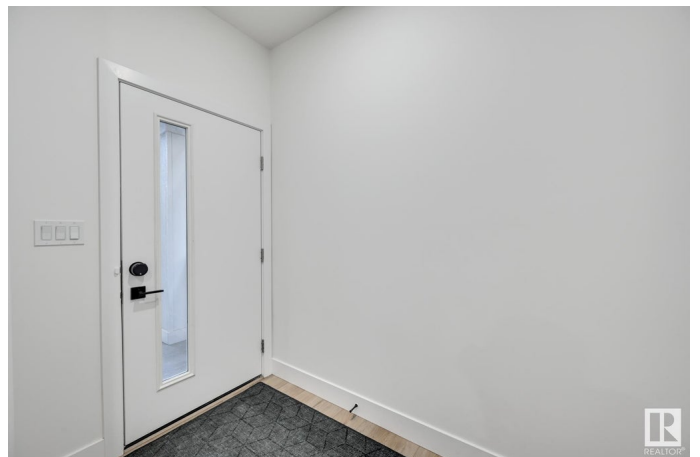
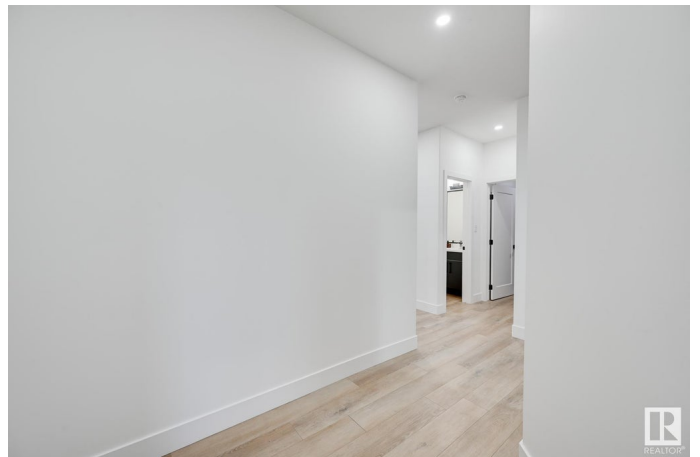
Prescott, Spruce Grove, AB

Every detail of this beautiful 2 story home is eye-catching and impressive. windows and floor-to-ceiling black ceramic fireplace. The kitchen is a chefs dream with stunning black kitchen cabinetry contrasted with white quartz counters & top of the line appliances. The black accents continue past the walk-through pantry into the mudroom, complete with custom built ins. The main floor offers a front office with a window, & upstairs are 3 generously sized bedrooms & a bonus that could easily be a 4th bedroom. The primary ensuite is a 5 piece with dual sinks, walk-in shower, soaker tub, separate toilet, walk-through closet leading to the laundry. The basement is unfinished basement with 2 windows, a separate entrance, and 9 ft ceilings - ideal for a suite. The double garage features extra high ceilings & a floor drain. Recently fenced & landscaped, act quickly before this BEAUTIFUL home is gone!

Built in 2023

Essential Information

MLS® #	E4424010
Price	\$649,900
Bedrooms	3
Bathrooms	2.50
Full Baths	2



Half Baths	1
Square Footage	2,044
Acres	0.00
Year Built	2023
Type	Single Family
Sub-Type	Detached Single Family
Style	2 Storey
Status	Active

Community Information

Address	35 Penn Place
Area	Spruce Grove
Subdivision	Prescott
City	Spruce Grove
County	ALBERTA
Province	AB
Postal Code	T7X 2W6

Amenities

Amenities	Air Conditioner, Ceiling 9 ft., Closet Organizers, Deck, No Smoking Home, Vinyl Windows, Natural Gas BBQ Hookup, 9 ft. Basement Ceiling
Parking	Double Garage Attached, Front Drive Access

Interior

Interior Features	ensuite bathroom
Appliances	Air Conditioning-Central, Dishwasher-Built-In, Dryer, Garage Control, Garage Opener, Hood Fan, Oven-Built-In, Oven-Microwave, Refrigerator, Stove-Countertop Electric, Washer, Window Coverings
Heating	Forced Air-1, Natural Gas
Stories	2
Has Basement	Yes
Basement	Full, Unfinished

Exterior

Exterior	Wood, Vinyl
Exterior Features	Fenced, Flat Site, Landscaped, Low Maintenance Landscape, Playground Nearby, Public Transportation, Schools, Shopping Nearby
Roof	Asphalt Shingles
Construction	Wood, Vinyl

Foundation Concrete Perimeter

Additional Information

Date Listed March 5th, 2025

Days on Market 32

Zoning Zone 91

DATA IS DEEMED RELIABLE BUT IS NOT GUARANTEED ACCURATE BY THE REALTORS® ASSOCIATION OF EDMONTON. COPYRIGHT 2025 BY THE REALTORS® ASSOCIATION OF EDMONTON. ALL RIGHTS RESERVED. Trademarks are owned or controlled by the Canadian Real Estate Association (CREA) and identify real estate professionals who are members of CREA (REALTOR®, REALTORS®) and/or the quality of services they provide (MLS®, Multiple Listing Service®)

Listing information last updated on April 6th, 2025 at 12:47pm MDT