

\$925,000 - 4278 Chichak Close, Edmonton

MLS® #E4424070

\$925,000

6 Bedroom, 5.00 Bathroom, 2,913 sqft
Single Family on 0.00 Acres

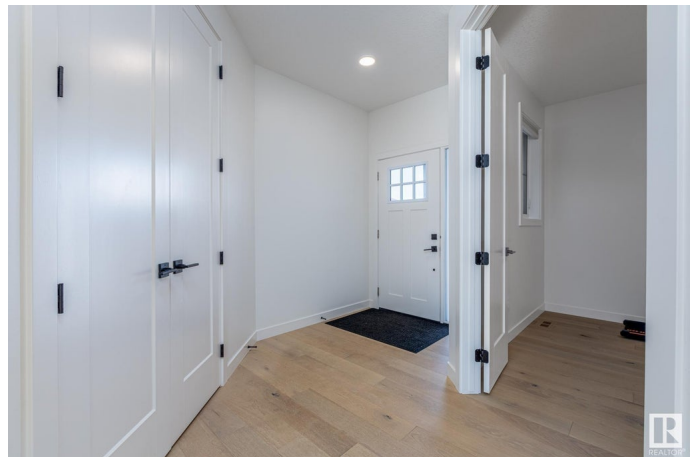
Chappelle Area, Edmonton, AB

Your dream home in Chappelle awaits. This stunning six-bedroom five-bathroom two-storey home is designed for convenience, income potential & multigenerational living. Backing onto Don Getty K-9 School you can watch your kids walk to class from your backyard. The bright open-concept main floor features a chef's kitchen with elevated white cabinets, quartz countertops, an oversized island w/ a butler's pantry with rough-in for a gas cooktop—ideal for high-heat cooking. A main-floor den can serve as a bedroom with a full bath nearby, perfect for extended family or guests. Upstairs the primary suite offers a spa-like ensuite with dual sinks, a freestanding tub & walk-in closet. A bonus room and massive laundry complete this level. The legal two-bedroom basement suite with a private entrance full kitchen & separate laundry is perfect for rental income or multigenerational living. Fully fenced landscaped featuring a spacious deck this home includes access to Chappelle Gardens rec center & backs onto the school.

Built in 2021

Essential Information

MLS® #	E4424070
Price	\$925,000



Bedrooms	6
Bathrooms	5.00
Full Baths	5
Square Footage	2,913
Acres	0.00
Year Built	2021
Type	Single Family
Sub-Type	Detached Single Family
Style	2 Storey
Status	Active

Community Information

Address	4278 Chichak Close
Area	Edmonton
Subdivision	Chappelle Area
City	Edmonton
County	ALBERTA
Province	AB
Postal Code	T6W 4B4

Amenities

Amenities	Air Conditioner, Ceiling 10 ft., Closet Organizers
Parking Spaces	1
Parking	Double Garage Attached, Insulated

Interior

Interior Features	ensuite bathroom
Appliances	Dishwasher-Built-In, Garage Control, Garage Opener, Hood Fan, Microwave Hood Fan, Oven-Built-In, Oven-Microwave, Stove-Countertop Gas, Window Coverings, Refrigerators-Two, TV Wall Mount
Heating	Forced Air-2, Natural Gas
Fireplace	Yes
Fireplaces	Insert, Wall Mount
Stories	3
Has Basement	Yes
Basement	Full, Finished

Exterior

Exterior	Wood, Stone, Vinyl
Exterior Features	Backs Onto Park/Trees, Landscaped, Schools
Roof	Asphalt Shingles
Construction	Wood, Stone, Vinyl
Foundation	Concrete Perimeter

School Information

Elementary	Donald R. Getty School
Middle	Donald R. Getty School
High	Dr. Anne Anderson School

Additional Information

Date Listed	March 5th, 2025
Days on Market	38
Zoning	Zone 55
HOA Fees	447.3
HOA Fees Freq.	Annually

DATA IS DEEMED RELIABLE BUT IS NOT GUARANTEED ACCURATE BY THE REALTORS® ASSOCIATION OF EDMONTON. COPYRIGHT 2025 BY THE REALTORS® ASSOCIATION OF EDMONTON. ALL RIGHTS RESERVED. Trademarks are owned or controlled by the Canadian Real Estate Association (CREA) and identify real estate professionals who are members of CREA (REALTOR®, REALTORS®) and/or the quality of services they provide (MLS®, Multiple Listing Service®)

Listing information last updated on April 12th, 2025 at 12:02pm MDT