

\$41,370

0 Bedroom, 0.00 Bathroom,
Single Family on 0.00 Acres

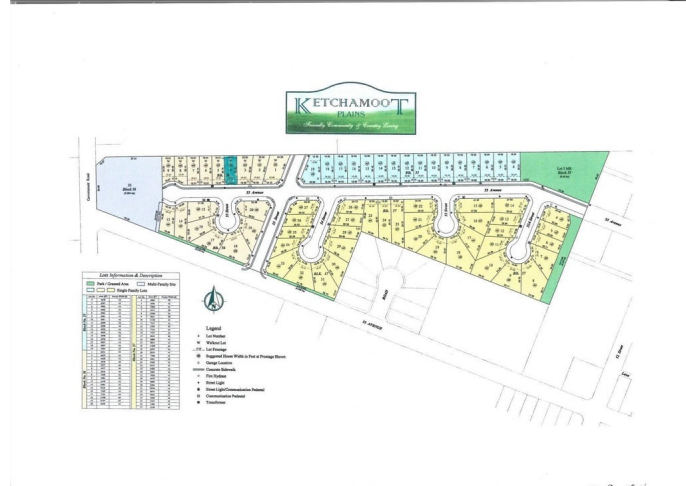
Tofield, Tofield, AB

49.25' x 115', fully serviced lot in the vharminig community of Tofield! Rolling land that could accomodate a walkout basement. 42ft pocket width. Residential Tac Incentive associated with this lot. Several other lots available that are similar in price and size.



Essential Information

MLS® #	E4424429
Price	\$41,370
Bathrooms	0.00
Acres	0.00
Type	Single Family
Sub-Type	Vacant Lot/Land
Status	Active



Community Information

Address	5508 55 Avenue
Area	Tofield
Subdivision	Tofield
City	Tofield
County	ALBERTA
Province	AB
Postal Code	T0B 4J0

Exterior

Exterior Features No Back Lane, Rolling Land

Additional Information

Date Listed	March 6th, 2025
Days on Market	44
Zoning	Zone 80

DATA IS DEEMED RELIABLE BUT IS NOT GUARANTEED ACCURATE BY THE REALTORS® ASSOCIATION OF EDMONTON. COPYRIGHT 2025 BY THE REALTORS® ASSOCIATION OF EDMONTON. ALL RIGHTS RESERVED.Trademarks are owned or controlled by the Canadian Real Estate Association (CREA) and identify real estate professionals who are members of CREA (REALTOR®, REALTORS®) and/or the quality of services they provide (MLS®, Multiple Listing Service®)

Listing information last updated on April 19th, 2025 at 12:17pm MDT