

Courtesy Of Lindsay S Parsons Of Liv Real Estate

\$220,000 - N/A, Edmonton

MLS® #E4424530

\$220,000

3 Bedroom, 1.50 Bathroom, 1,120 sqft

Single Family on 0.00 Acres

Rosslyn, Edmonton, AB

Great North End Location! Easy proximity to shopping, transit and schools. Great property to make your home or investment potential.

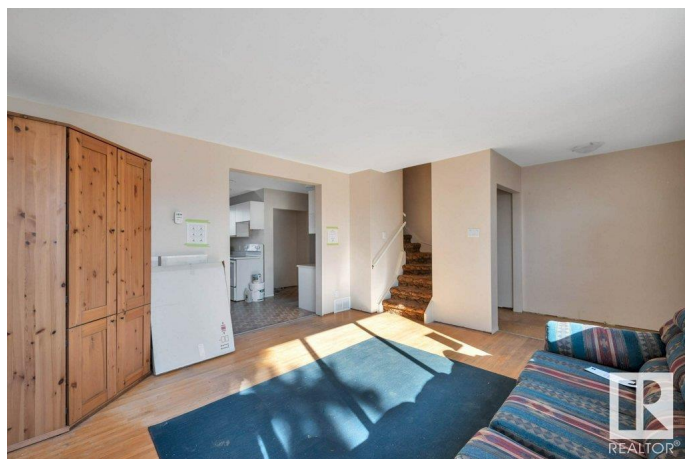
Built in 1960

Essential Information

MLS® #	E4424530
Price	\$220,000
Bedrooms	3
Bathrooms	1.50
Full Baths	1
Half Baths	1
Square Footage	1,120
Acres	0.00
Year Built	1960
Type	Single Family
Sub-Type	Residential Attached
Style	2 Storey
Status	Active

Community Information

Address	N/A
Area	Edmonton
Subdivision	Rosslyn
City	Edmonton
County	ALBERTA
Province	AB



Postal Code T5E 0Z6

Amenities

Amenities See Remarks
Parking Single Garage Detached

Interior

Appliances See Remarks
Heating See Remarks
Stories 2
Has Basement Yes
Basement Full, Partially Finished

Exterior

Exterior Wood, Stucco
Exterior Features See Remarks
Roof Asphalt Shingles
Construction Wood, Stucco
Foundation Concrete Perimeter

Additional Information

Date Listed March 7th, 2025
Days on Market 34
Zoning Zone 01

DATA IS DEEMED RELIABLE BUT IS NOT GUARANTEED ACCURATE BY THE REALTORS® ASSOCIATION OF EDMONTON. COPYRIGHT 2025 BY THE REALTORS® ASSOCIATION OF EDMONTON. ALL RIGHTS RESERVED. Trademarks are owned or controlled by the Canadian Real Estate Association (CREA) and identify real estate professionals who are members of CREA (REALTOR®, REALTORS®) and/or the quality of services they provide (MLS®, Multiple Listing Service®)

Listing information last updated on April 9th, 2025 at 10:32pm MDT