

\$419,000 - 10316 106 Avenue, Westlock

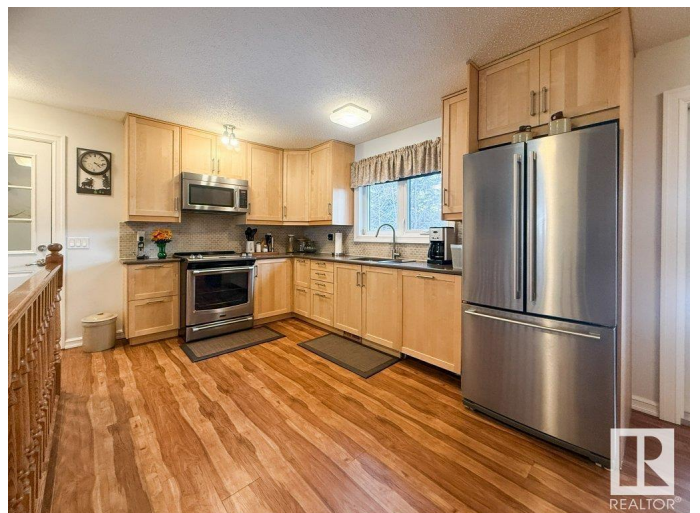
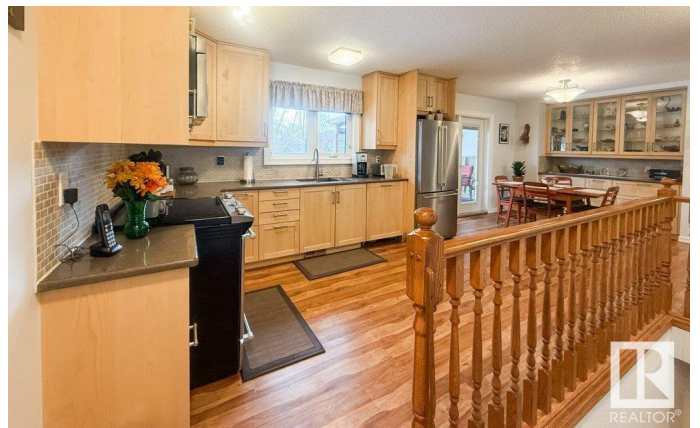
MLS® #E4424812

\$419,000

4 Bedroom, 3.00 Bathroom, 1,574 sqft
Single Family on 0.00 Acres

Westlock, Westlock, AB

This lot is over 14,000 sq ft. So private with tall, mature trees, fences & neighbors on 1 side only. The home was bought (show home) by the 1st owner at the Edm Exhibition in 1971, moved to Westlock onto a full bsmt & loved for many years. This 2nd Owner has seen many upgrades - shingles, soffits, fascia, windows, interior/exterior doors, flooring, lighting, kitchen, appls., & so much more. Single, front attached garage. Heated, enclosed mudroom for coats, storage & enjoyment. Gorgeous kitchen w/quartz counters, new cabinets (D/W w/cab door), tons of storage, new patio doors to covered, extended deck. Beautiful primary suite w/huge ensuite (dble sinks, toilet & shower) & wall of closets (you can also put full wall of closets in primary bdrm). Another bdrm, office or bdrm plus new main bath. Down to massive fmly room, games/crafts area, bdrm, bathrm, big laundry, storage rm & furnace rm w/newer furnace & water tank. Massive yard w/2 sheds & much, much more to see. Located 2 blocks to elementary school.



Built in 1971

Essential Information

MLS® #	E4424812
Price	\$419,000

Bedrooms	4
Bathrooms	3.00
Full Baths	3
Square Footage	1,574
Acres	0.00
Year Built	1971
Type	Single Family
Sub-Type	Detached Single Family
Style	Bungalow
Status	Active

Community Information

Address	10316 106 Avenue
Area	Westlock
Subdivision	Westlock
City	Westlock
County	ALBERTA
Province	AB
Postal Code	T7P 1L6

Amenities

Amenities	Deck, No Animal Home, No Smoking Home, Vinyl Windows, See Remarks
Parking	Front Drive Access, Parking Pad Cement/Paved, Single Garage Attached, See Remarks

Interior

Interior Features	ensuite bathroom
Appliances	Dishwasher-Built-In, Dryer, Fan-Ceiling, Garage Control, Garage Opener, Microwave Hood Fan, Refrigerator, Storage Shed, Stove-Electric, Washer, Window Coverings
Heating	Forced Air-1, Natural Gas
Fireplace	Yes
Fireplaces	Woodstove
Stories	2
Has Basement	Yes
Basement	Full, Finished

Exterior

Exterior	Wood, Stucco
Exterior Features	Back Lane, Fenced, Fruit Trees/Shrubs, Playground Nearby, Schools, Treed Lot, Vegetable Garden
Lot Description	14,067 sq feet
Roof	Asphalt Shingles
Construction	Wood, Stucco
Foundation	Concrete Perimeter

School Information

Elementary	Westlock Elementary
Middle	RF Staples
High	RF Staples

Additional Information

Date Listed	March 5th, 2025
Days on Market	33
Zoning	Zone 70

DATA IS DEEMED RELIABLE BUT IS NOT GUARANTEED ACCURATE BY THE REALTORS® ASSOCIATION OF EDMONTON. COPYRIGHT 2025 BY THE REALTORS® ASSOCIATION OF EDMONTON. ALL RIGHTS RESERVED. Trademarks are owned or controlled by the Canadian Real Estate Association (CREA) and identify real estate professionals who are members of CREA (REALTOR®, REALTORS®) and/or the quality of services they provide (MLS®, Multiple Listing Service®)

Listing information last updated on April 7th, 2025 at 11:02am MDT