

\$524,900 - 3523 5a Avenue, Edmonton

MLS® #E4425077

\$524,900

3 Bedroom, 3.00 Bathroom, 1,778 sqft
Single Family on 0.00 Acres

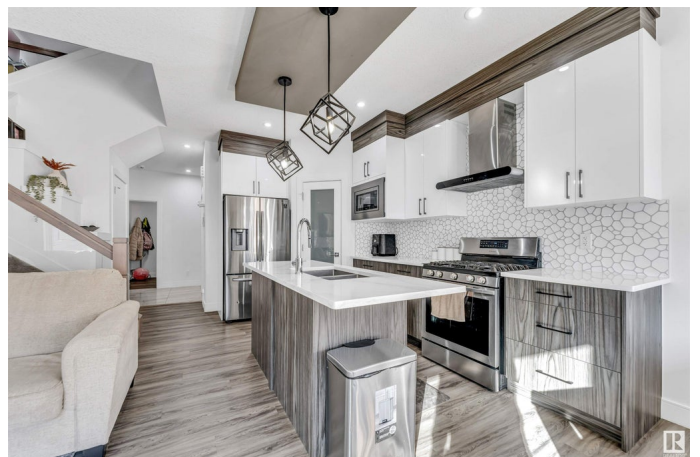
Charlesworth, Edmonton, AB

Immaculate 1770 sq ft half duplex featuring 9 ft ceilings on the main floor, 3 bedrooms, 3 baths, and a main floor den with a window â€” perfect as an office or extra bedroom. Enjoy a LEGAL separate side entrance, a spacious bonus room, and a double attached garage. The main floor boasts a beautifully upgraded kitchen with floor-to-ceiling cabinets, quartz countertops, a massive pantry, and high-end stainless steel appliances. The living area offers an electric fireplace, large windows for natural light, and stylish updated light fixtures. This home is filled with upgrades, including glass railings, an elegant indented ceiling, and modern finishes throughout. Upstairs, you'll find 3 spacious bedrooms, a bonus room, a 4pc bath, and a convenient laundry room. The primary suite features a walk-in closet and a 5pc ensuite. The beautifully maintained backyard adds the perfect finishing touch. Conveniently located with easy access to the Henday, and close to schools, shopping, parks, and trails. Must See.

Built in 2020

Essential Information

MLS® #	E4425077
Price	\$524,900



Bedrooms	3
Bathrooms	3.00
Full Baths	3
Square Footage	1,778
Acres	0.00
Year Built	2020
Type	Single Family
Sub-Type	Half Duplex
Style	2 Storey
Status	Active

Community Information

Address	3523 5a Avenue
Area	Edmonton
Subdivision	Charlesworth
City	Edmonton
County	ALBERTA
Province	AB
Postal Code	T6X 2W7

Amenities

Amenities	See Remarks
Parking	Double Garage Attached

Interior

Interior Features	ensuite bathroom
Appliances	Dishwasher-Built-In, Dryer, Hood Fan, Oven-Microwave, Refrigerator, Stove-Gas, Washer, Window Coverings
Heating	Forced Air-1, Natural Gas
Stories	2
Has Basement	Yes
Basement	Full, Unfinished

Exterior

Exterior	Wood, Vinyl
Exterior Features	Airport Nearby, Fenced, Landscaped, Level Land, Shopping Nearby, See Remarks
Roof	Asphalt Shingles
Construction	Wood, Vinyl

Foundation Concrete Perimeter

Additional Information

Date Listed March 11th, 2025

Days on Market 26

Zoning Zone 53

HOA Fees 210

HOA Fees Freq. Annually

DATA IS DEEMED RELIABLE BUT IS NOT GUARANTEED ACCURATE BY THE REALTORS® ASSOCIATION OF EDMONTON. COPYRIGHT 2025 BY THE REALTORS® ASSOCIATION OF EDMONTON. ALL RIGHTS RESERVED. Trademarks are owned or controlled by the Canadian Real Estate Association (CREA) and identify real estate professionals who are members of CREA (REALTOR®, REALTORS®) and/or the quality of services they provide (MLS®, Multiple Listing Service®)

Listing information last updated on April 6th, 2025 at 8:32am MDT