

## \$429,900 - 20513 128 Avenue, Edmonton

MLS® #E4425441

**\$429,900**

3 Bedroom, 3.50 Bathroom, 1,460 sqft

Single Family on 0.00 Acres

Trumpeter Area, Edmonton, AB

Welcom to TRUMPETER! Montoria built 2 storey duplex offering over 2050 sqft of total living space with a fully finished basement. An OPEN CONCEPT main floor with an inviting living room. Kitchen with QUARTZ COUNTERTOPS, plenty of cabinet space, centre island, TILE BACKSPLASH, a spacious corner PANTRY and STAINLESS STEAL APPLIANCES. The second-floor features 3 generous sized bedrooms, a 4-piece bathroom. PRIMARY SUITE boasts a sizable WALK-IN closet and a 4pc ENSUITE. The developed basement offers a recreational family room, loads of storage and a modern 3 pc bathroom. No back door neighbours. Attractively landscaped with full fence and a sizable 2 tiered deck and storage shed. Walking distance to stores, kids playground, Lois hole park, and golf club.

Built in 2017

### Essential Information

MLS® #	E4425441
Price	\$429,900
Bedrooms	3
Bathrooms	3.50
Full Baths	3
Half Baths	1
Square Footage	1,460



Acres	0.00
Year Built	2017
Type	Single Family
Sub-Type	Half Duplex
Style	2 Storey
Status	Active

### Community Information

Address	20513 128 Avenue
Area	Edmonton
Subdivision	Trumpeter Area
City	Edmonton
County	ALBERTA
Province	AB
Postal Code	T5S 0L8

### Amenities

Amenities	Deck, Gazebo
Parking	Single Garage Attached

### Interior

Interior Features	ensuite bathroom
Appliances	Dishwasher-Built-In, Dryer, Garage Control, Garage Opener, Microwave Hood Fan, Refrigerator, Stove-Electric, Washer, Window Coverings
Heating	Forced Air-1, Natural Gas
Stories	3
Has Basement	Yes
Basement	Full, Finished

### Exterior

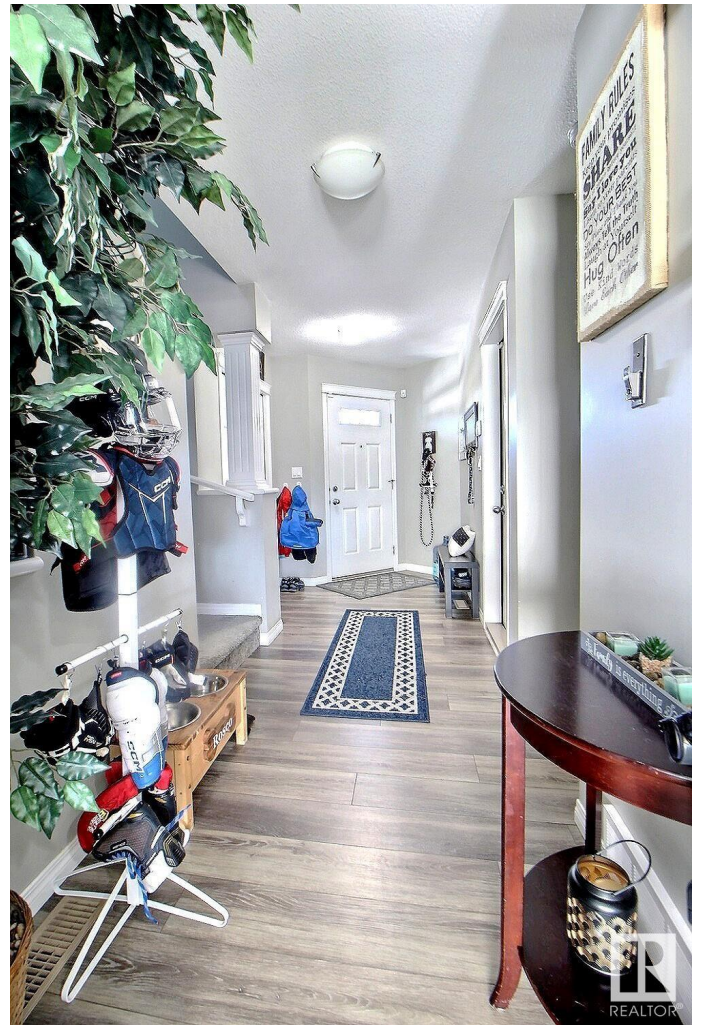
Exterior	Wood, Vinyl
Exterior Features	Cul-De-Sac, Fenced, Landscaped, No Back Lane
Roof	Asphalt Shingles
Construction	Wood, Vinyl
Foundation	Concrete Perimeter

### Additional Information

Date Listed	March 13th, 2025
Days on Market	36

Zoning

Zone 59



DATA IS DEEMED RELIABLE BUT IS NOT GUARANTEED ACCURATE BY THE REALTORS® ASSOCIATION OF EDMONTON. COPYRIGHT 2025 BY THE REALTORS® ASSOCIATION OF EDMONTON. ALL RIGHTS RESERVED. Trademarks are owned or controlled by the Canadian Real Estate Association (CREA) and identify real estate professionals who are members of CREA (REALTOR®, REALTORS®) and/or the quality of services they provide (MLS®, Multiple Listing Service®)

Listing information last updated on April 17th, 2025 at 9:47pm MDT