

Courtesy Of Cory S Lucas Of MaxWell Progressive

\$340,000 - 14335 123 Street, Edmonton

MLS® #E4426942

\$340,000

3 Bedroom, 2.00 Bathroom, 788 sqft

Single Family on 0.00 Acres

Carlisle, Edmonton, AB

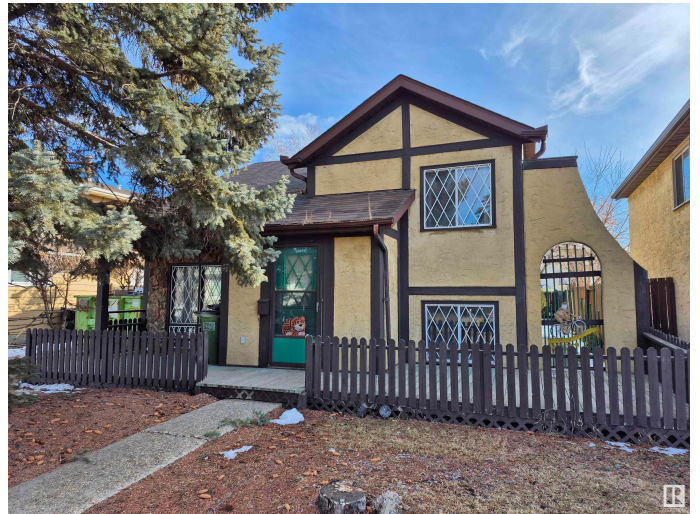
Welcome to this original-owner, one-of-a-kind 3-bedroom bi-level home in Carlisle! The upper level features 2 bedrooms, an original kitchen with a cozy breakfast nook, and a separate dining area. Downstairs offers a spacious bedroom and 2 large family rooms, perfect for entertaining. The oversized tandem garage includes a work area, ideal for projects or storage. Enjoy peace of mind with a newer furnace and hot water tank, plus a 4-year-old roof. This unique layout offers endless potential.

Built in 1977

Essential Information

MLS® #	E4426942
Price	\$340,000
Bedrooms	3
Bathrooms	2.00
Full Baths	2
Square Footage	788
Acres	0.00
Year Built	1977
Type	Single Family
Sub-Type	Detached Single Family
Style	Bi-Level
Status	Active

Community Information



Address	14335 123 Street
Area	Edmonton
Subdivision	Carlisle
City	Edmonton
County	ALBERTA
Province	AB
Postal Code	T5X 3M1

Amenities

Amenities	Hot Water Natural Gas
Parking Spaces	2
Parking	Over Sized, Tandem

Interior

Appliances	Dryer, Hood Fan, Refrigerator, Stove-Electric, Washer
Heating	Forced Air-1, Natural Gas
Stories	2
Has Basement	Yes
Basement	Full, Finished

Exterior

Exterior	Wood, Stucco
Exterior Features	Fenced, Flat Site, Landscaped, Level Land, No Back Lane, Schools, Shopping Nearby, See Remarks
Roof	Asphalt Shingles
Construction	Wood, Stucco
Foundation	Concrete Perimeter

Additional Information

Date Listed	March 21st, 2025
Days on Market	14
Zoning	Zone 27

DATA IS DEEMED RELIABLE BUT IS NOT GUARANTEED ACCURATE BY THE REALTORS® ASSOCIATION OF EDMONTON. COPYRIGHT 2025 BY THE REALTORS® ASSOCIATION OF EDMONTON. ALL RIGHTS RESERVED. Trademarks are owned or controlled by the Canadian Real Estate Association (CREA) and identify real estate professionals who are members of CREA (REALTOR®, REALTORS®) and/or the quality of services they provide (MLS®, Multiple Listing Service®)

Listing information last updated on April 4th, 2025 at 5:47pm MDT