

\$749,900 - Hwy 2a And Rr 245, Rural Leduc County

\$749,900

None, Rural Leduc County, AB

Essential Information

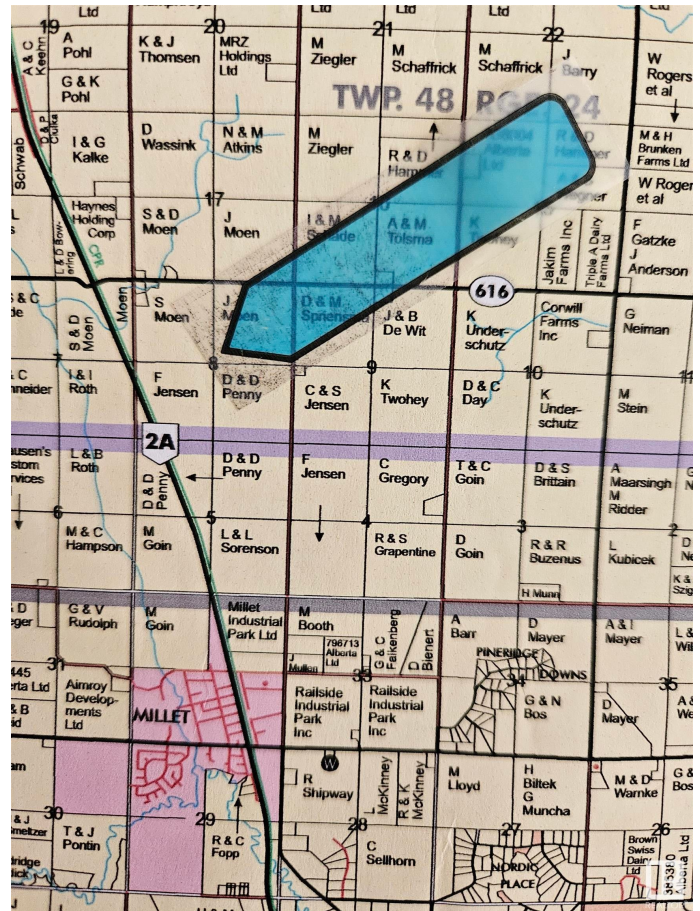
MLS® #	E4426993
Price	\$749,900
Bathrooms	0.00
Acres	130.85
Type	Rural
Sub-Type	Vacant Lot/Land
Status	Active

Community Information

Address	Hwy 2a And Rr 245
Area	Rural Leduc County
Subdivision	None
City	Rural Leduc County
County	ALBERTA
Province	AB
Postal Code	T0C 1Z0

Exterior

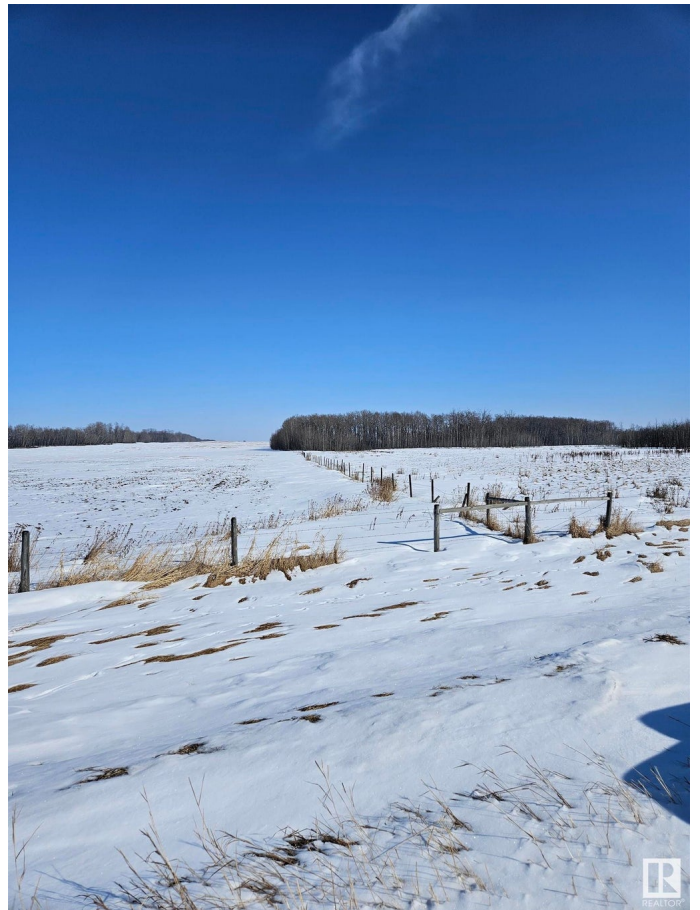
Exterior Features Airport Nearby, Fenced, Flat Site, Golf Nearby, Shopping Nearby, See



Remarks

Additional Information

Date Listed March 21st, 2025
Days on Market 29
Zoning Zone 80



DATA IS DEEMED RELIABLE BUT IS NOT GUARANTEED ACCURATE BY THE REALTORS® ASSOCIATION OF EDMONTON. COPYRIGHT 2025 BY THE REALTORS® ASSOCIATION OF EDMONTON. ALL RIGHTS RESERVED. Trademarks are owned or controlled by the Canadian Real Estate Association (CREA) and identify real estate professionals who are members of CREA (REALTOR®, REALTORS®) and/or the quality of services they provide (MLS®, Multiple Listing Service®)

Listing information last updated on April 19th, 2025 at 8:02pm MDT