

\$738,900 - 43 Meadowlink Common, Spruce Grove

MLS® #E4427780

\$738,900

4 Bedroom, 3.50 Bathroom, 2,368 sqft
Single Family on 0.00 Acres

McLaughlin_SPGR, Spruce Grove, AB

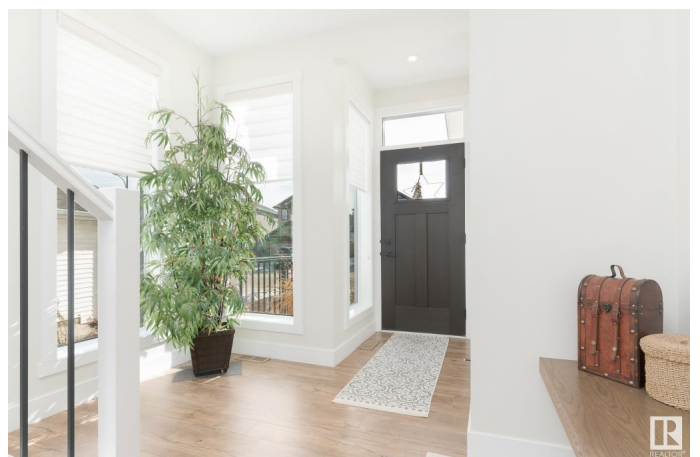
Experience the beauty and charm of this 2300+ square foot, fully finished two-storey home, perfectly situated on a prime lot backing a picturesque pond. Enjoy breathtaking summer sunsets and the backyard privacy you've always wanted. From its striking curb appeal to its elegant interior finishes, this property truly stands out. Step inside to discover a carefully crafted main floor featuring a spacious foyer, living room, dinette and island kitchen. All designed to showcase the serene westward views. Upstairs, the primary bedroom offers a retreat like ambiance with a sloped ceiling, luxurious 5 piece en-suite and a walk-in closet connected to the upstairs laundry. Two additional bedrooms and a spacious 5 piece bathroom complete the upper level. The finished basement adds even more living space with a fourth bedroom, 4 piece bathroom and a massive recreation area. Situated on a quiet street near the Grove Heritage Park trail system, this remarkable home combines comfort, beauty and an unbeatable location.

Built in 2018

Essential Information

MLS® # E4427780

Price \$738,900



Bedrooms	4
Bathrooms	3.50
Full Baths	3
Half Baths	1
Square Footage	2,368
Acres	0.00
Year Built	2018
Type	Single Family
Sub-Type	Detached Single Family
Style	2 Storey
Status	Active

Community Information

Address	43 Meadowlink Common
Area	Spruce Grove
Subdivision	McLaughlin_SPGR
City	Spruce Grove
County	ALBERTA
Province	AB
Postal Code	T7X 0W1

Amenities

Amenities	Deck, See Remarks
Parking	Double Garage Attached, Heated, Insulated
Is Waterfront	Yes

Interior

Interior Features	ensuite bathroom
Appliances	Dryer, Garage Control, Garage Opener, Hood Fan, Oven-Microwave, Refrigerator, Storage Shed, Stove-Gas, Washer, Window Coverings
Heating	Forced Air-1, Natural Gas
Fireplace	Yes
Fireplaces	Tile Surround
Stories	3
Has Basement	Yes
Basement	Full, Finished

Exterior

Exterior	Wood, Stone, Vinyl
----------	--------------------

Exterior Features	Backs Onto Lake, Fenced, Landscaped, Shopping Nearby, See Remarks
Roof	Asphalt Shingles
Construction	Wood, Stone, Vinyl
Foundation	Concrete Perimeter

Additional Information

Date Listed	March 27th, 2025
Days on Market	16
Zoning	Zone 91

DATA IS DEEMED RELIABLE BUT IS NOT GUARANTEED ACCURATE BY THE REALTORS® ASSOCIATION OF EDMONTON. COPYRIGHT 2025 BY THE REALTORS® ASSOCIATION OF EDMONTON. ALL RIGHTS RESERVED. Trademarks are owned or controlled by the Canadian Real Estate Association (CREA) and identify real estate professionals who are members of CREA (REALTOR®, REALTORS®) and/or the quality of services they provide (MLS®, Multiple Listing Service®)

Listing information last updated on April 12th, 2025 at 12:32pm MDT