

\$499,900 - 42 Ellington Crescent, St. Albert

MLS® #E4428431

\$499,900

4 Bedroom, 3.00 Bathroom, 1,497 sqft

Single Family on 0.00 Acres

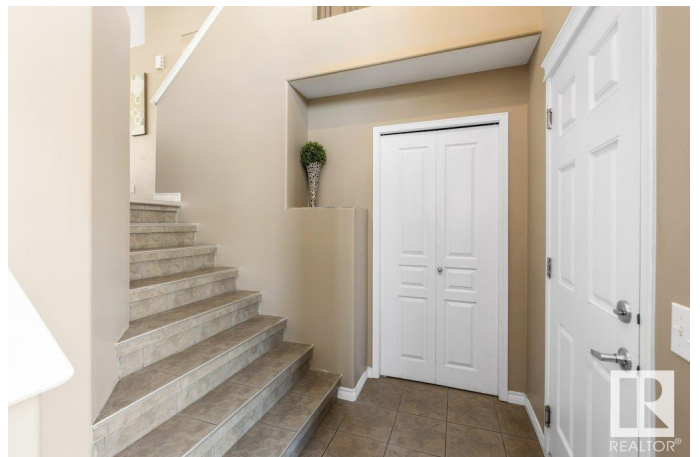
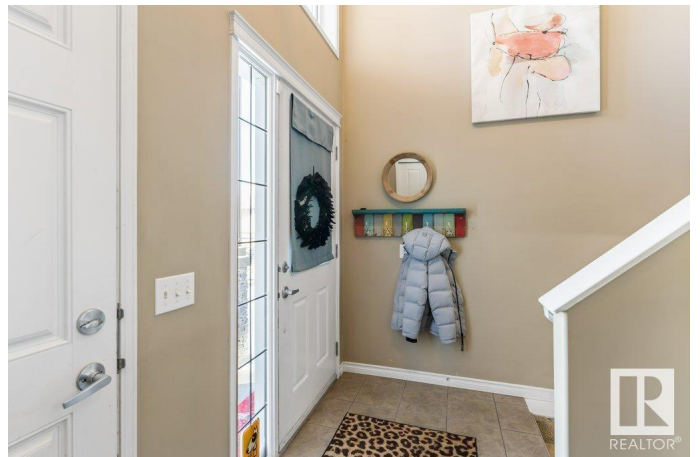
Erin Ridge, St. Albert, AB

Located on quiet crescent close to parks and walking trails, discover this FULLY FINISHED Daytona built bi-level. The main floor has a gorgeous DARK MAPLE kitchen with corner pantry, island with raised eating bar, glass tile backsplash and stainless steel appliances. There is a large breakfast nook, a flex room (perfect for formal dining, den or office) and an open concept great room. Completing the main floors is a bedroom and 4pce bathroom. The master bedroom is upstairs and your own private retreat with a 4 pce ENSUITE with separate shower and soaker tub and huge WALK IN CLOSET. The fully finished basement offers TWO additional bedrooms, 3pce bath, large family room with GAS FIREPLACE and 9' CEILINGS. The yard is fully fenced and landscaped. Complete with CENTRAL AIR CONDITIONING. Amazing family home in a fantastic location!

Built in 2011

Essential Information

MLS® #	E4428431
Price	\$499,900
Bedrooms	4
Bathrooms	3.00
Full Baths	3
Square Footage	1,497



Acres	0.00
Year Built	2011
Type	Single Family
Sub-Type	Detached Single Family
Style	Bi-Level
Status	Active

Community Information

Address	42 Ellington Crescent
Area	St. Albert
Subdivision	Erin Ridge
City	St. Albert
County	ALBERTA
Province	AB
Postal Code	T8N 4B9

Amenities

Amenities	Ceiling 9 ft., Vaulted Ceiling
Parking	Double Garage Attached

Interior

Interior Features	ensuite bathroom
Appliances	Air Conditioning-Central, Dishwasher-Built-In, Dryer, Microwave Hood Fan, Refrigerator, Stove-Electric, Washer, Window Coverings, TV Wall Mount
Heating	Forced Air-1, Natural Gas
Fireplace	Yes
Fireplaces	Mantel, Tile Surround
Stories	3
Has Basement	Yes
Basement	Full, Finished

Exterior

Exterior	Wood, Stone, Vinyl
Exterior Features	Fenced, Golf Nearby, Landscaped, Playground Nearby, Public Transportation, Schools, Shopping Nearby
Roof	Asphalt Shingles
Construction	Wood, Stone, Vinyl
Foundation	Concrete Perimeter

Additional Information

Date Listed April 1st, 2025

Days on Market 11

Zoning Zone 24

DATA IS DEEMED RELIABLE BUT IS NOT GUARANTEED ACCURATE BY THE REALTORS® ASSOCIATION OF EDMONTON. COPYRIGHT 2025 BY THE REALTORS® ASSOCIATION OF EDMONTON. ALL RIGHTS RESERVED. Trademarks are owned or controlled by the Canadian Real Estate Association (CREA) and identify real estate professionals who are members of CREA (REALTOR®, REALTORS®) and/or the quality of services they provide (MLS®, Multiple Listing Service®)

Listing information last updated on April 12th, 2025 at 6:47pm MDT