

\$1,099,000 - 53305 Rge Road 273, Rural Parkland County

MLS® #E4430117

\$1,099,000

5 Bedroom, 3.50 Bathroom, 2,062 sqft

Rural on 1.34 Acres

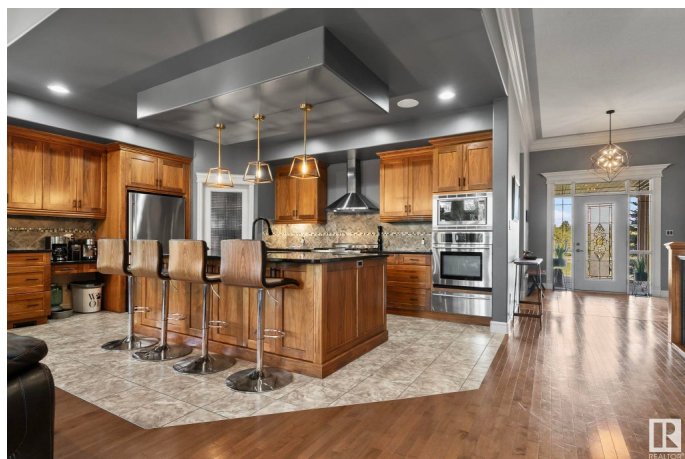
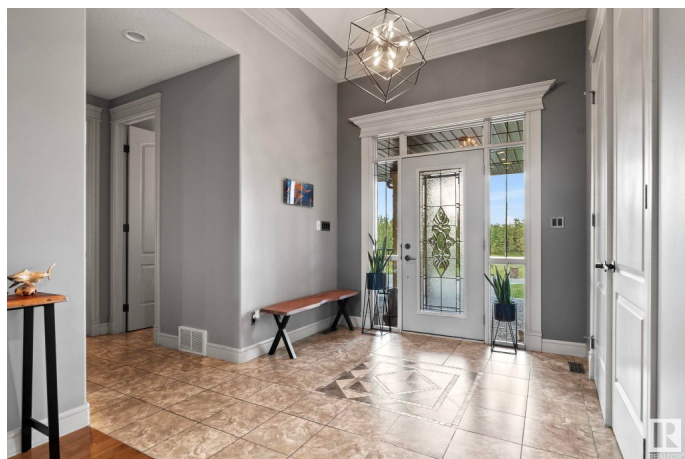
Atim Creek Springs, Rural Parkland County, AB

Located 5 minutes north of Spruce Grove in sought after Atim Creek Springs, this gorgeous home has all of the benefits of country living with the convenience of city amenities. The main floor features high ceilings, and an open concept living space. The kitchen has beautiful walnut cabinets, state of the art appliances, a walk through pantry and a huge centre island. Off of the dining room is the west facing upper deck with gorgeous views of the property. The primary suite has a spacious ensuite and walk-in closet. There is one more bedroom with an ensuite on this level. The walkout basement features a large rec space, as well as a full bar area. There are also 3 more bedrooms and another full bathroom downstairs. This home also has a heated triple garage, central air, upper and lower decks, a fire pit area, above ground pool and more. It's the perfect space for your family both inside and out, a MUST SEE!

Built in 2007

Essential Information

MLS® #	E4430117
Price	\$1,099,000
Bedrooms	5



Bathrooms	3.50
Full Baths	3
Half Baths	1
Square Footage	2,062
Acres	1.34
Year Built	2007
Type	Rural
Sub-Type	Detached Single Family
Style	Bungalow
Status	Active

Community Information

Address	53305 Rge Road 273
Area	Rural Parkland County
Subdivision	Atim Creek Springs
City	Rural Parkland County
County	ALBERTA
Province	AB
Postal Code	T7X 3N3

Amenities

Features	Air Conditioner, Deck, Detectors Smoke, Fire Pit, Front Porch, Vaulted Ceiling, Vinyl Windows, Walkout Basement
----------	---

Interior

Interior Features	ensuite bathroom
Heating	Forced Air-1, In Floor Heat System, Natural Gas
Fireplace	Yes
Stories	2
Has Basement	Yes
Basement	Full, Finished

Exterior

Exterior	Wood
Exterior Features	Cul-De-Sac, Fenced, Golf Nearby, Landscaped, No Through Road, Private Setting, Schools, Shopping Nearby, Treed Lot
Construction	Wood
Foundation	Concrete Perimeter

Additional Information

Date Listed April 10th, 2025

Days on Market 9

Zoning Zone 70

DATA IS DEEMED RELIABLE BUT IS NOT GUARANTEED ACCURATE BY THE REALTORS® ASSOCIATION OF EDMONTON. COPYRIGHT 2025 BY THE REALTORS® ASSOCIATION OF EDMONTON. ALL RIGHTS RESERVED. Trademarks are owned or controlled by the Canadian Real Estate Association (CREA) and identify real estate professionals who are members of CREA (REALTOR®, REALTORS®) and/or the quality of services they provide (MLS®, Multiple Listing Service®)

Listing information last updated on April 19th, 2025 at 4:47pm MDT