

Courtesy Of Adrienne Carlton Of Exp Realty

\$975,000 - 53510 Range Road 20, Rural Lac Ste. Anne County

MLS® #E4430577

\$975,000

3 Bedroom, 3.00 Bathroom, 5,262 sqft
Rural on 7.00 Acres

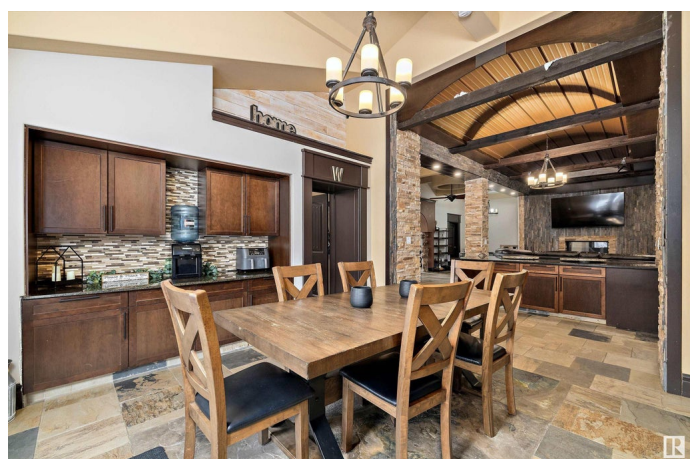
None, Rural Lac Ste. Anne County, AB

Welcome to your country dream, a timber frame bardominium,with over 5000 sq ft, on 7 acres, with an 8300 sq ft shop! Enter through the stone arch & stamped concrete elevated path. Below, detailed tile work & set up for a koi fish pond. The main floor boasts a 25' high entrance with 12' timber frame trusses, custom stonework, slate floors & stairs. The entire main floor has in-floor heat with 4 zones, 3 bdrms, one of them is complete with a walk-in closet, 4 pc ensuite with a round jacuzzi tub. Open concept entertainment area with large living room, double-sided fireplace, kitchen with huge granite island, custom 8ft high cabinets an 12'ceilings. Games room with wet bar attached. 2 additional bonus rooms, laundry and 5 pc bath also on main. Retreat to your 1100 sqft primary bdrm with 2 W/I closets, 5 pc ensuite including elevated jacuzzi tub, & its own laundry! Home has attached double tandem garage on one side, single on the other. Shop offers heated workspace w/tons of room for your toys or business!

Built in 1997

Essential Information

| | |
|--------|-----------|
| MLS® # | E4430577 |
| Price | \$975,000 |



| | |
|----------------|------------------------|
| Bedrooms | 3 |
| Bathrooms | 3.00 |
| Full Baths | 3 |
| Square Footage | 5,262 |
| Acres | 7.00 |
| Year Built | 1997 |
| Type | Rural |
| Sub-Type | Detached Single Family |
| Style | 2 Storey |
| Status | Active |

Community Information

| | |
|-------------|----------------------------|
| Address | 53510 Range Road 20 |
| Area | Rural Lac Ste. Anne County |
| Subdivision | None |
| City | Rural Lac Ste. Anne County |
| County | ALBERTA |
| Province | AB |
| Postal Code | T0E 2P0 |

Amenities

| | |
|----------|--|
| Features | Air Conditioner, Bar, Closet Organizers, Deck, Detectors Smoke, Fire Pit, Gazebo, Guest Suite, Hot Tub, Insulation-Upgraded, Wet Bar, Workshop |
|----------|--|

Interior

| | |
|-------------------|-----------------------------------|
| Interior Features | ensuite bathroom |
| Heating | In Floor Heat System, Natural Gas |
| Stories | 2 |
| Has Basement | Yes |
| Basement | None, No Basement |

Exterior

| | |
|-------------------|---|
| Exterior | Wood |
| Exterior Features | Backs Onto Park/Trees, Fenced, Landscaped, Private Setting, Treed Lot |
| Construction | Wood |
| Foundation | Piling |

Additional Information

Date Listed April 11th, 2025

Days on Market 11

Zoning Zone 90

DATA IS DEEMED RELIABLE BUT IS NOT GUARANTEED ACCURATE BY THE REALTORS® ASSOCIATION OF EDMONTON. COPYRIGHT 2025 BY THE REALTORS® ASSOCIATION OF EDMONTON. ALL RIGHTS RESERVED. Trademarks are owned or controlled by the Canadian Real Estate Association (CREA) and identify real estate professionals who are members of CREA (REALTOR®, REALTORS®) and/or the quality of services they provide (MLS®, Multiple Listing Service®)

Listing information last updated on April 22nd, 2025 at 12:03pm MDT