

\$89,900 - 144 Northbend Drive, Wetaskiwin

MLS® #E4430889

\$89,900

0 Bedroom, 0.00 Bathroom,
Single Family on 0.00 Acres

Wetaskiwin, Wetaskiwin, AB

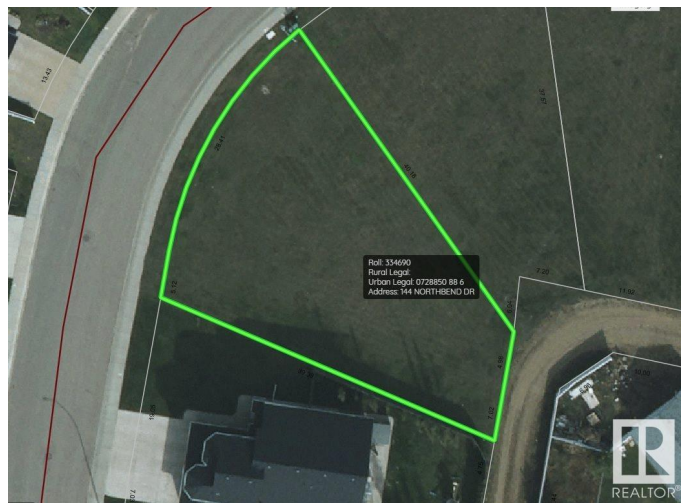
Wow Wetaskiwin! Be a part of one of the best subdivisions in Wetaskiwin. 144 Northbend Drive won't disappoint. This large oversized pie shaped lot is waiting for building vision. Quiet semi cul-de-sac street offers East sunrise and beautiful West sunsets. Walking distance to our Wetaskiwin Hospital and care facilities makes Northebend a sought after location. Be Part of a great area of town. 144 Northbend Drive awaits!

Essential Information

| | |
|-----------|-----------------|
| MLS® # | E4430889 |
| Price | \$89,900 |
| Bathrooms | 0.00 |
| Acres | 0.00 |
| Type | Single Family |
| Sub-Type | Vacant Lot/Land |
| Status | Active |

Community Information

| | |
|-------------|---------------------|
| Address | 144 Northbend Drive |
| Area | Wetaskiwin |
| Subdivision | Wetaskiwin |
| City | Wetaskiwin |
| County | ALBERTA |
| Province | AB |
| Postal Code | T9A 3N6 |



Exterior

Exterior Features Airport Nearby, Back Lane, Flat Site, Golf Nearby, Level Land, Paved Lane, Playground Nearby, Public Swimming Pool, Schools

School Information

Elementary Centennial
Middle Clear Vista
High WCHS

Additional Information

Date Listed April 15th, 2025
Days on Market 4
Zoning Zone 80

DATA IS DEEMED RELIABLE BUT IS NOT GUARANTEED ACCURATE BY THE REALTORS® ASSOCIATION OF EDMONTON. COPYRIGHT 2025 BY THE REALTORS® ASSOCIATION OF EDMONTON. ALL RIGHTS RESERVED.Trademarks are owned or controlled by the Canadian Real Estate Association (CREA) and identify real estate professionals who are members of CREA (REALTOR®, REALTORS®) and/or the quality of services they provide (MLS®, Multiple Listing Service®)
Listing information last updated on April 19th, 2025 at 8:02am MDT