

# **\$189,000 - 338 5504 Schonsee Drive, Edmonton**

MLS® #E4432778

**\$189,000**

1 Bedroom, 1.00 Bathroom, 667 sqft

Condo / Townhouse on 0.00 Acres

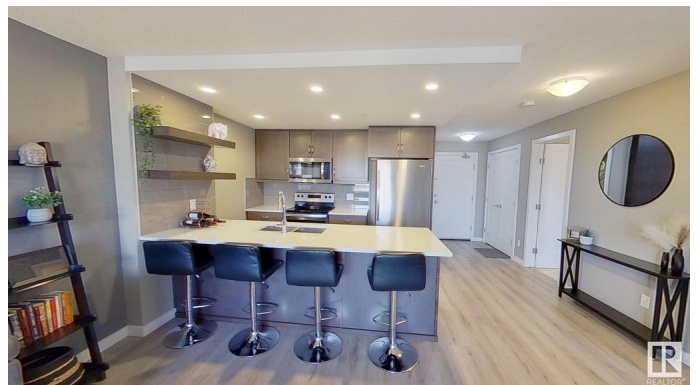
Schonsee, Edmonton, AB

Welcome to this bright and modern condo tucked away in a quiet building in the sought-after community of Schonsee! Boasting a bright and open floor plan, this condo features vinyl plank throughout, the kitchen with elegant quartz countertop, stainless steel appliances, and a large island that overlooks the living area. The primary bedroom includes a convenient walk-through closet that leads to a well-appointed 4 piece bathroom. Enjoy the practicality of in-suite laundry with extra storage room for all your essentials. Extras that set this home apart include same-floor storage unit, heated underground parking, a fully equipped gym, a welcoming social room, and plenty of visitor parking for guests. Located steps from a spray park and close to all amenities, with quick access to the Anthony Henday - this home offers comfort, style and convenience!

Built in 2018

## **Essential Information**

MLS® #	E4432778
Price	\$189,000
Bedrooms	1
Bathrooms	1.00
Full Baths	1
Square Footage	667



Acres	0.00
Year Built	2018
Type	Condo / Townhouse
Sub-Type	Detached Condominium
Style	Single Level Apartment
Status	Active

### Community Information

Address	338 5504 Schonsee Drive
Area	Edmonton
Subdivision	Schonsee
City	Edmonton
County	ALBERTA
Province	AB
Postal Code	T5Z 0N9

### Amenities

Amenities	Exercise Room, No Smoking Home, Parking-Visitor, Social Rooms
Parking	Heated, Single Indoor, Underground

### Interior

Interior Features	ensuite bathroom
Appliances	Dishwasher-Built-In, Dryer, Oven-Microwave, Refrigerator, Stove-Electric, Washer, Window Coverings
Heating	Baseboard, Combination
Stories	1
Has Basement	Yes
Basement	None, No Basement

### Exterior

Exterior	Wood, Brick, Vinyl
Exterior Features	Low Maintenance Landscape, Playground Nearby, Public Transportation, Schools, Shopping Nearby
Roof	Asphalt Shingles
Construction	Wood, Brick, Vinyl
Foundation	Concrete Perimeter

### Additional Information

Date Listed	April 25th, 2025
-------------	------------------

Days on Market	1
Zoning	Zone 28
Condo Fee	\$370

DATA IS DEEMED RELIABLE BUT IS NOT GUARANTEED ACCURATE BY THE REALTORS® ASSOCIATION OF EDMONTON. COPYRIGHT 2025 BY THE REALTORS® ASSOCIATION OF EDMONTON. ALL RIGHTS RESERVED. Trademarks are owned or controlled by the Canadian Real Estate Association (CREA) and identify real estate professionals who are members of CREA (REALTOR®, REALTORS®) and/or the quality of services they provide (MLS®, Multiple Listing Service®)

Listing information last updated on April 26th, 2025 at 8:17pm MDT